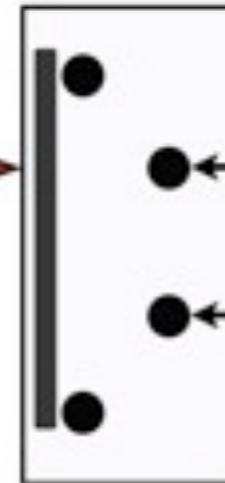


Here is a perfect system for shimming commercial doors !

READY SHIMS

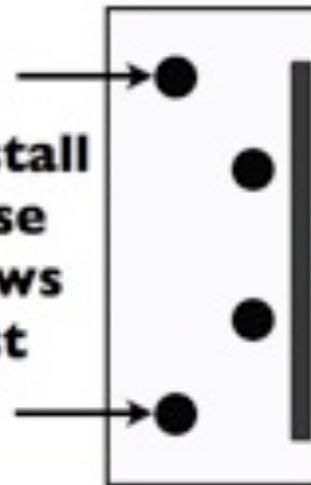
They are..
REMOVABLE
RE-STICKABLE
&
STACKABLE.

Place shim here
to **PUSH** door
towards strike



Reinstall
these
screws
first

Reinstall
these
screws
first



Place shim here
to **PULL** door
from strike



To Adjust Door :
Peel & Stick shim onto frame behind top
hinge , bottom hinge OR ALL hinges if needed.

SHIMMING SIMPLIFIED

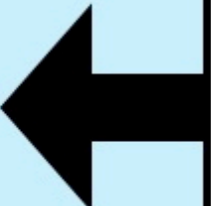
BIG GAP along Strike side

TIGHT along Strike side

PUSH TOP



PULL TOP

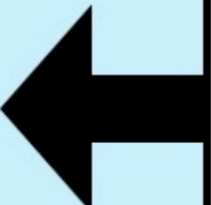


COMPLETE BOTH STEPS

PUSH BOTTOM



PULL BOTTOM



Reinstall THESE SCREWS **FIRST**

Reinstall THESE SCREWS **FIRST**

Reinstall THESE SCREWS **FIRST**

Reinstall THESE SCREWS **FIRST**

STICK READY SHIM on Frame at location shown.

SHIMMING SIMPLIFIED

TIGHT at TOP with
GAP at Bottom.

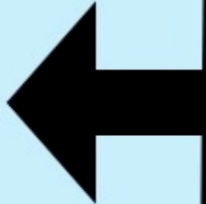
GAP at TOP
TIGHT at Bottom

STEP 1

Reinstall THESE
SCREWS **FIRST**



**PULL
TOP**



STEP 2



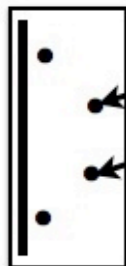
Reinstall THESE
SCREWS **FIRST**

*COMPLETE STEP 2
if Necessary.*

**PUSH
TOP**

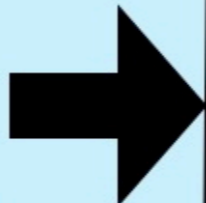


STEP 2



Reinstall THESE
SCREWS **FIRST**

**PUSH
BOTTOM**

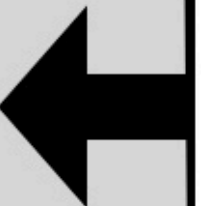


STEP 1

Reinstall THESE
SCREWS **FIRST**



**PULL
BOTTOM**



STICK READY SHIM on Frame at location shown